

## ADDENDUM NO. 1

DATE: March 6, 2023

Project: Aurora Public Library District  
Eola Branch Rooftop Unit Replacement

Architect: Studio GC architecture + interiors  
223 W. Jackson Blvd. Suite 1200  
Chicago, Illinois 60606

Project No.: 22083

### 1.1 SUMMARY

- A. The Bidding Documents and Project Manual dated February 20, 2023 and Drawings dated February 20, 2023 for the above referenced project are hereby modified and revised as follows.
- B. The information contained within this Addendum modifies, supplements or replaces information contained in the Project Manual and the Contract Drawings and is hereby made a part of the Contract Documents.
- C. Acknowledge receipt of this Addendum on the Bid Form. FAILURE TO DO SO MAY SUBJECT THE BIDDER TO DISQUALIFICATION.
- D. The Bidding Documents include the Project Manual dated February 20, 2023, the Drawings dated February 20, 2023, and Addenda issued prior to the receipt of bids.

### 1.2 PROJECT MANUAL

#### A. Section 004113 – BID FORM

- 1. BIDDER'S REQUIRED BID DOCUMENTS CHECKLIST: Delete: Certificate Regarding Criminal Background Investigations

#### B. Section 000001-TABLE OF CONTENTS

- 1. Delete:

|        |   |   |
|--------|---|---|
| 004552 | CERTIFICATE REGARDING CRIMINAL BACKGROUND INVESTIGATIONS..... | 1 |
| 004554 | AUTHORIZATION FOR CRIMINAL BACKGROUND INVESTIGATIONS.....     | 1 |

#### C. Section 004552 – Certificate Regarding Criminal Background Investigations

- 1. Delete section.

#### D. Section 004552 – Authorization For Criminal Background Investigation

- 1. Delete section.

1.3 DRAWINGS

- A. See attached record drawings.

1.4 CLARIFICATIONS

- A. Refer to attached Request for Interpretation document.
- B. Scan of PreBid Meeting sign-in is attached.

End Addendum 009113.1

This Addendum consists of 2 pages and the following attachments.

Attachments:

Project Manual: 22083\_Add 01 Request for Interpretation.pdf  
22083 PreBid Sign-in.pdf

Drawings: Pages from Aurora Public Library - Eola Branch Addition 2001.pdf  
Pages from Aurora Public Library - Eola Branch Addition 2006.pdf

## REQUESTS FOR INTERPRETATION

Note: Questions below include inquiries received 3/06/2023

---

1. Would you be able to provide any information regarding electric panel or breaker locations?
  - a. Refer to attached annotated record drawings for breaker and panel information:
    - i. E3.1, E6.1 | Pages from Aurora Public Library – Eola Branch Addition 2006.pdf
    - ii. E3.1, E5.0 | Pages from Aurora Public Library – Eola Branch Addition 2001.pdf

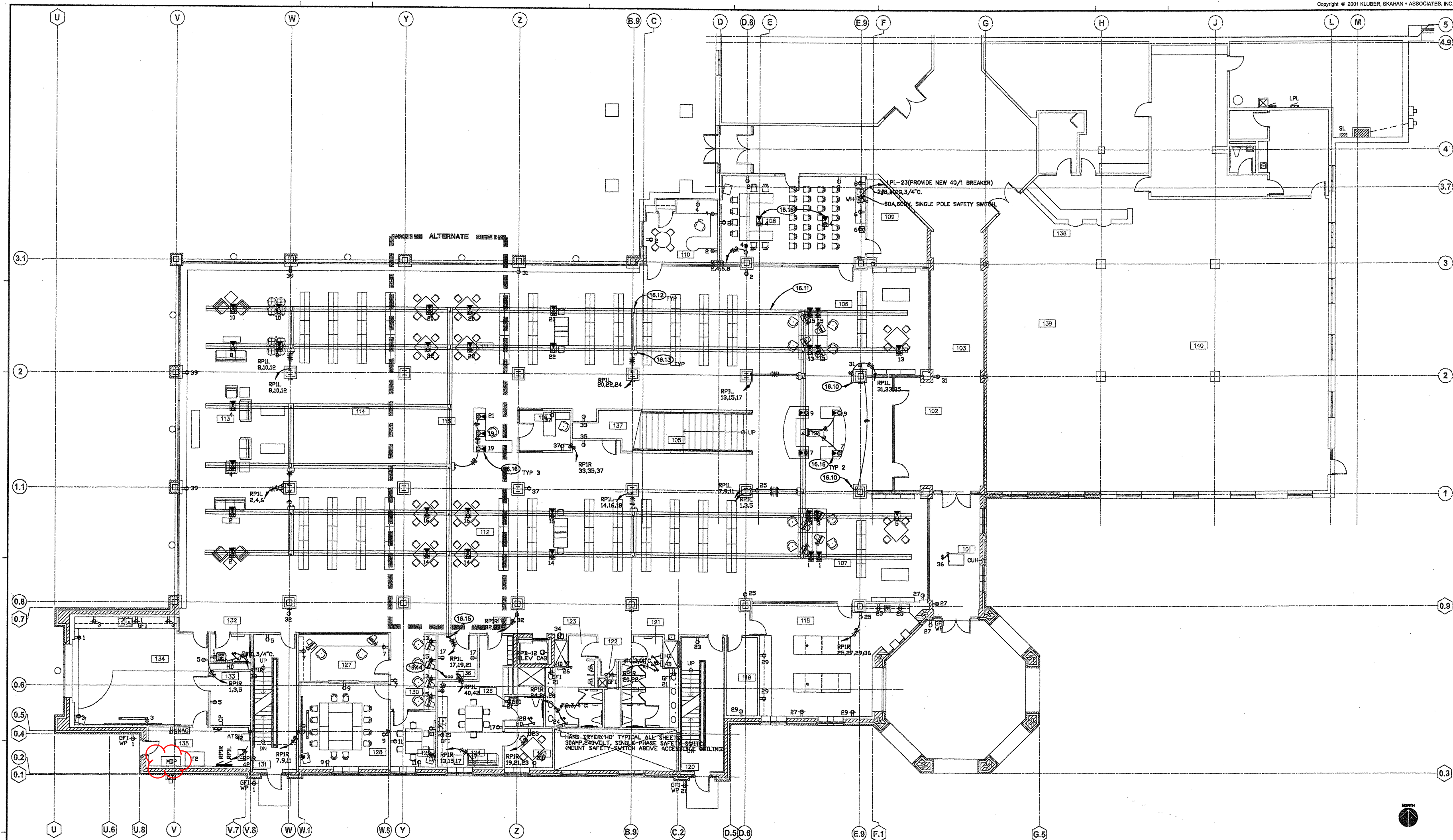
**Client:** Aurora Public Library District  
**Project:** Eola Branch Rooftop Unit Replacement  
**Project No.:** 22083  
**Date:** Thursday, March 2nd, 2023 @ 9:00AM  
**Meeting:** Mandatory Prebid Meeting/Walk-Through

## SIGN-IN SHEET

PLEASE PRINT LEGIBLY

| NAME             | COMPANY NAME            | GC/SUB | PHONE          | E-MAIL ADDRESS                 |
|------------------|-------------------------|--------|----------------|--------------------------------|
| RYAN LEFAVE      | SLC                     |        | 312 253-7431   | R.Lefave @ studiogc.com        |
| Adam Natonski    | Atlas Crane             |        | 630-524-8813   | Adam@AtlasCraneServiceInc.com  |
| APRIL SIERAK     | FEMORAN, INC            |        | 847-498-4800   | FEM-ESTIMATING@femorani.com    |
| ANDY CENTERS     | MG MECHANICAL           |        | 815-347-7909   | ESTIMATING@MGMECHANICAL.COM    |
| Trevor Schwiesow | YMI Group               |        | 815-546-0077   | Estimating@theymigroup.com     |
| DAVE TABEL       | AMBER MECH.             |        | 708/597-9700   | ESTIMATING@AMBERMECH.COM       |
| Ryan Spaulding   | IMEG                    |        | 630 717 2446   | Ryan.d.Spaulding@imegcorp.com  |
| Moin ISLAM       | AIR COMFORT LLC         |        | (312) 505-3641 | ISLAMM@AIRCOMFORT.COM          |
| HANK ARTLIP      | ARTLIP AND SONS, INC.   |        | 630 - 996-1560 | HANK@ARTLIPANDSONS.COM         |
| Jeremiah Presley | Bee Liner Lean Services |        | 708-515-7641   | jeremiah@bee-lean-services.com |
|                  |                         |        |                |                                |
|                  |                         |        |                |                                |
|                  |                         |        |                |                                |
|                  |                         |        |                |                                |
|                  |                         |        |                |                                |
|                  |                         |        |                |                                |



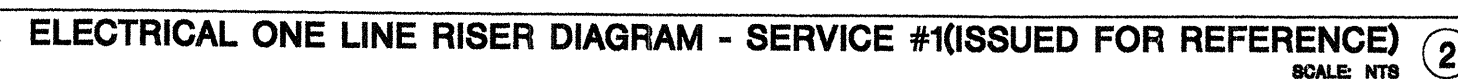




16.02 PROVIDE NEW ELECTRICAL SERVICE. MAKE SERVICE APPLICATION TO UTILITY COMPANY IMMEDIATELY TO AVOID SCHEDULING DELAYS.

16.07 PROVIDE ELECTRICAL CONNECTIONS TO ELEVATOR SYSTEMS PER MFR'S INSTALLATION INSTRUCTIONS, SUCH AS, PIT LIGHT/SWITCH, PIT RECEPTACLE, SUMP PUMP AND CAB POWER/PHONE CONNECTION.

16.09 PROVIDE ELEVATOR ROOM HEAT DETECTOR WITH CONTROL POWER AND ENCLOSED BREAKER W/ SHUNT TRIP.



**EEOLA ROAD BRANCH LIBRARY: ADDITION AND RENOVATION**

[illegible]

|          |            |
|----------|------------|
| JOB NO.  | 98-168-251 |
| DRAWN    | MTM        |
| CHECKED  | MTM        |
| APPROVED | MTM        |

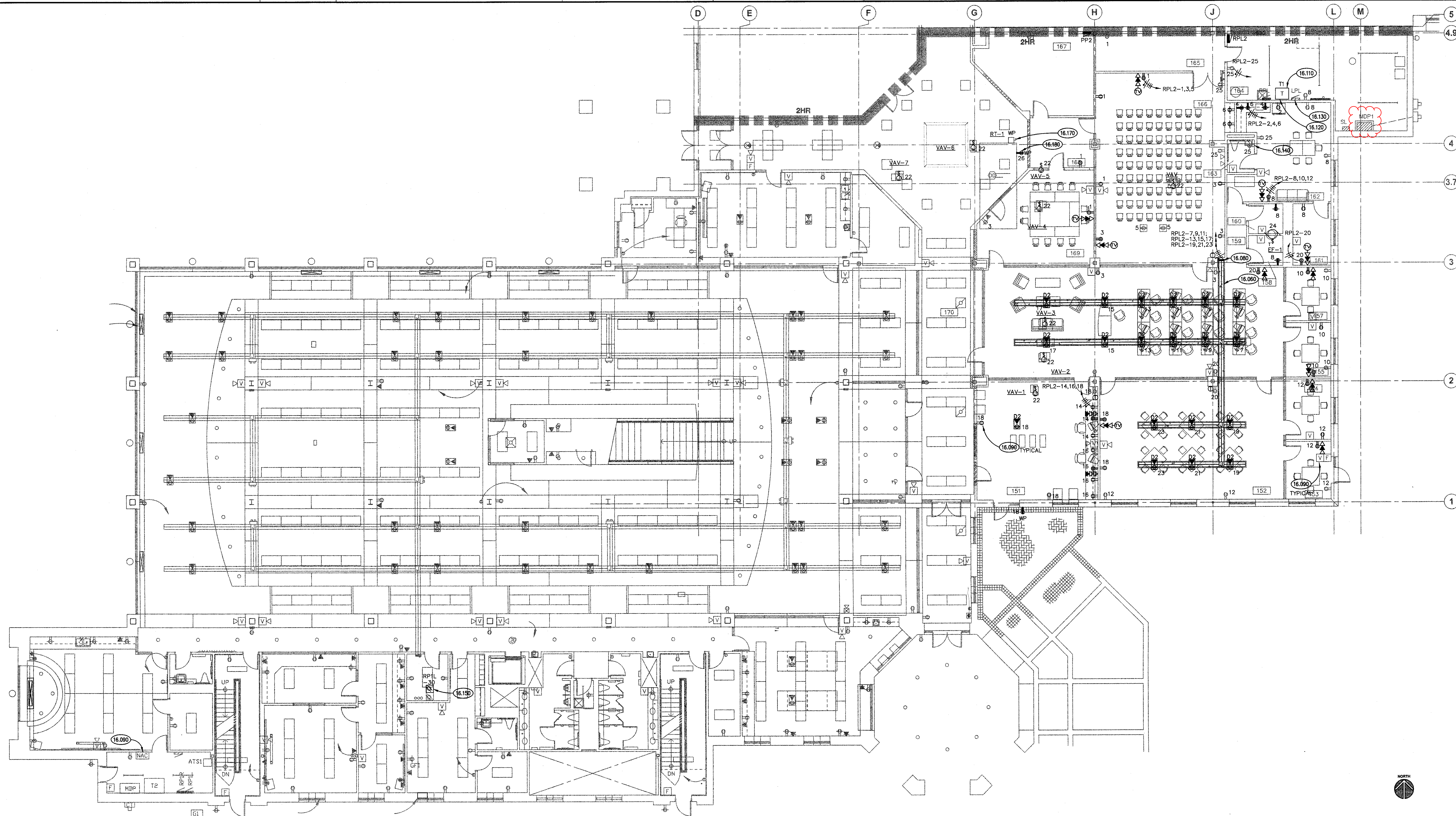
|             |  |
|-------------|--|
| SHEET TITLE |  |
|-------------|--|

### ELECTRICAL ONE LINE RISER DIAGRAM

SHEET NUMBER

### E5.0





## ELECTRICAL POWER AND COMMUNICATIONS PLAN

SCALE: 1/8" = 1'-0"

1

## KEYNOTES

- 16.080 PROVIDE UNDERFLOOR RACEWAY SYSTEM AS CONFIGURED ON THIS DRAWING.  
16.080 UNDERFLOOR RACEWAY SYSTEM CONDUIT TRANSITION, TYPICAL. PROVIDE 2(QUANT) SPARE 3/4" CONDUIT STUBS TO PANELBOARD RPL AND 4(QUANT) 3/4"E.C. STUBS TO IDF LOCATION IN ADDITION TO CIRCUITING REQUIREMENTS.  
16.090 EXTEND EXISTING NOTIFICATION APPLIANCE CIRCUIT TO APPLIANCES IN THIS AREA. PERFORM CIRCUIT LOADING CALCULATIONS PRIOR TO COMMENCEMENT OF WORK. MODIFY EXISTING RECORD DRAWINGS.  
16.110 TRANSFORMER UPGRADE: DEMOLISH 37.5 KVA TRANSFORMER, FEEDERS AND GROUND/BOND CONDUCTOR. PROVIDE NEW 75KVA TRANSFORMER, FEEDERS AND GROUND/BOND AND REFEED PANEL RPL.  
16.120 PANELBOARD '1G' UPGRADE: DEMOLISH PANELBOARD '1G'. PROVIDE NEW PANELBOARD RPL2 AND FEEDER. SUB-FEED FROM PANEL RPL WITH NEW FEEDER. PROVIDE NEW 100/3 BREAKER AT RPL FOR SUB-FEED TO PANEL RPL2. PROVIDE JUNCTION BOXES, CONDUIT & RACEWAY TO EXTEND EXISTING BRANCH CIRCUITS TO NEW PANELBOARD.  
16.130 DEMOLISH 45/3 BREAKER AND PROVIDE NEW 90/3 BREAKER FOR TRANSFORMER UPGRADE.  
16.140 PROVIDE NEW GFCI RECEPTACLE IN EXISTING OPENING.  
16.150 IDF RACK. PROVIDE RECEPTACLE, MOUNT TO RACK.  
16.170 DISCONNECT LOCATED ON ROOF. COORDINATE EXACT LOCATION OF DISCONNECT WITH MECHANICAL EQUIPMENT.  
16.180 RECEPTACLE LOCATED ON ROOF.

## ROOM SCHEDULE

| RM. NO. | ROOM NAME                    |
|---------|------------------------------|
| 150     | READING AREA                 |
| 151     | TECHNICAL SERVICES WORK ROOM |
| 152     | QUIET READING ROOM           |
| 153     | SMALL GROUP STUDY            |
| 154     | SMALL GROUP STUDY            |
| 155     | SMALL GROUP STUDY            |
| 156     | COMPUTER AREA                |
| 157     | SMALL GROUP STUDY            |
| 158     | WOMEN'S TOILET               |
| 159     | CORRIDOR                     |
| 160     | MEN'S TOILET                 |
| 161     | SMALL CONFERENCE ROOM        |
| 162     | STAFF LOUNGE                 |
| 163     | STAFF TOILET                 |
| 164     | MECHANICAL ROOM              |
| 165     | STORAGE                      |
| 166     | MULTI PURPOSE ROOM           |
| 167     | FOOD SERVICE                 |
| 168     | CAFE SEATING AREA            |
| 169     | LARGE GROUP STUDY            |
| 170     | CORRIDOR                     |

## GENERAL NOTES

- REFER TO ARCHITECTURAL, MECHANICAL, PLUMBING, FIRE PROTECTION PLANS, SHOP DRAWINGS AND MANUFACTURERS INSTALLATION INSTRUCTIONS FOR ADDITIONAL INFORMATION ON EXACT POWER, WIRING & ROUGH-IN REQUIREMENTS AND LOCATIONS OF DEVICES.
- REFER TO HVAC EQUIPMENT SCHEDULE FOR EQUIPMENT BRANCH CIRCUIT WIRING INFORMATION.
- UNLESS NOTED OTHERWISE, ALL HOMERUNS SHALL CONSIST OF A MAXIMUM OF 3 CIRCUITS (PHASE A, B & C, NEUTRAL & GROUND) IN 3/4" C. MINIMUM WIRE SIZE SHALL BE #12 AWG. WIRE SIZE FOR RECEPTACLE HOMERUN CIRCUITS SHALL BE 3#12, 1#10 & 1#12G. PROVIDE LARGER SIZE WIRE FOR VOLTAGE DROP WHERE REQUIRED.
- DO NOT CUT THROUGH MASONRY BOND BEAMS OR ANY OTHER STRUCTURAL ELEMENT WHEN INSTALLING OPENINGS REQUIRED FOR ALL DUCTWORK, PIPING, CONDUITS OR OTHER WORK. COORDINATE WITH THE STRUCTURAL DRAWINGS AND MASON CONTRACTOR FOR ALL BOND BEAM AND STRUCTURAL ELEMENT LOCATIONS. CONTRACTOR CUTTING THROUGH OR OTHERWISE DAMAGING THESE ELEMENTS WILL BE RESPONSIBLE FOR ALL ASSOCIATED ENGINEERING FEES AND SUBSEQUENT RETROFIT REINFORCING DEEMED NECESSARY TO REINSTATE THE CONTINUITY AND INTEGRITY OF THE DAMAGED ELEMENTS.
- COORDINATE LOCATIONS OF ELECTRICAL DEVICES WITH INFORMATION CONTAINED ON ARCHITECTURAL PLAN AND ELEVATION DRAWINGS.
- UNLESS NOTED OTHERWISE, ROUTE ALL POWER CIRCUITRY TO PANEL 'RPL2'.

ISSUED FOR BID

JOB NO. 05-168-517  
DRAWN MTK  
CHECKED MTK  
APPROVED MTK

SHEET TITLE

ELECTRICAL  
POWER AND  
COMMUNICATIONS  
PLAN

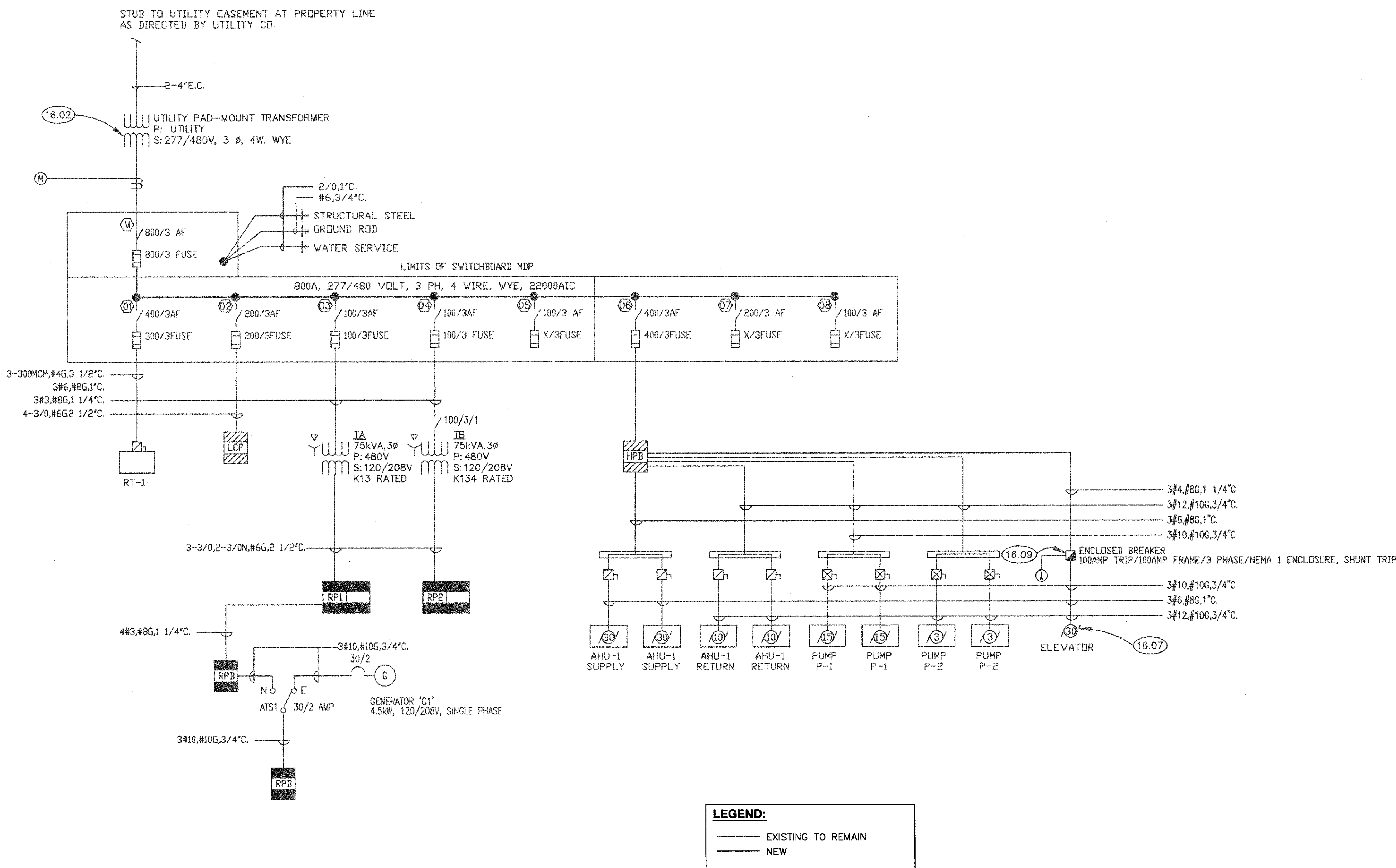
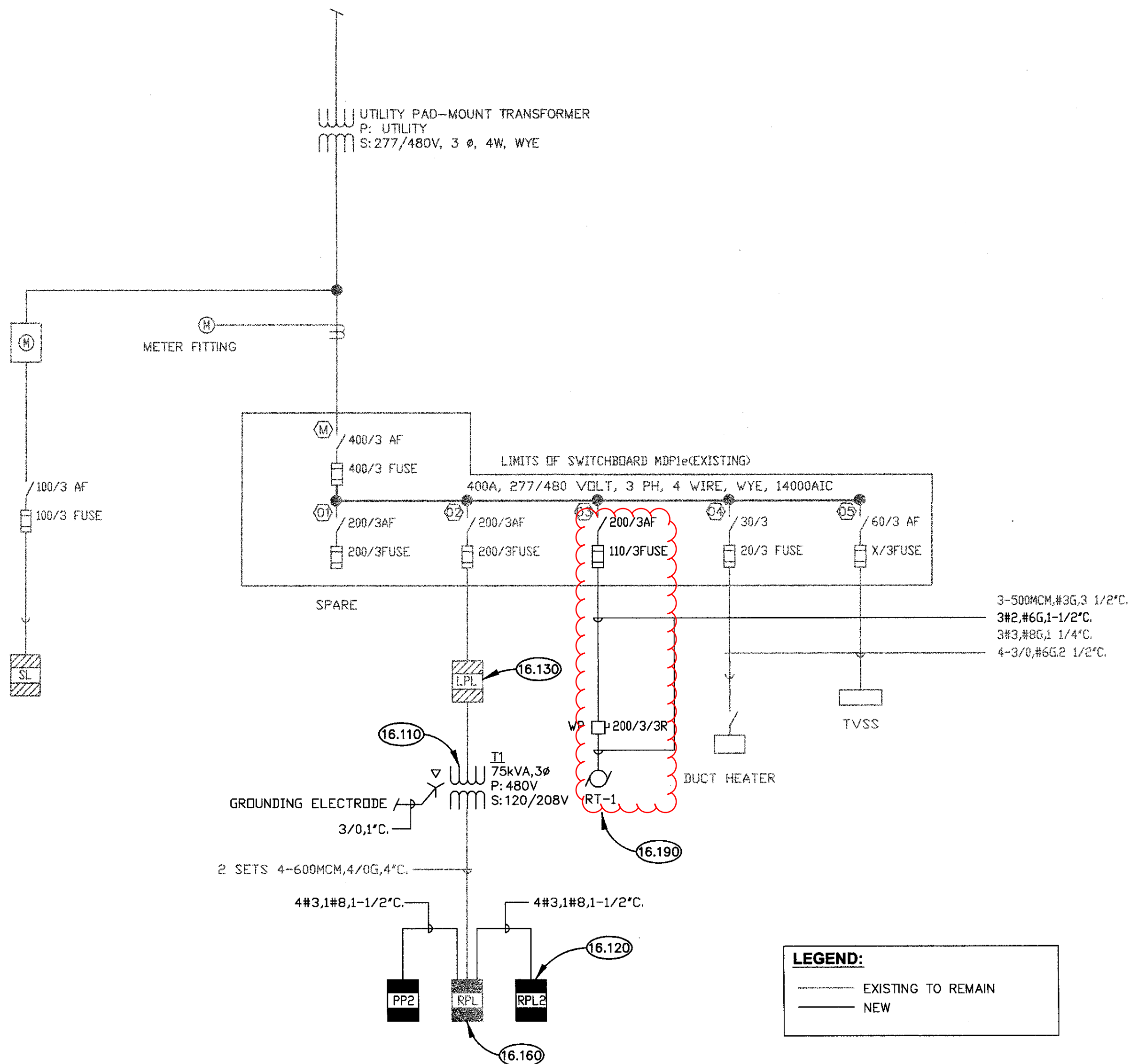
SHEET NUMBER

E3.1



## KEYNOTES

- 16.110 TRANSFORMER UPGRADE: DEMOLISH 37.5 KVA TRANSFORMER, FEEDERS AND GROUND/BOND CONDUCTOR. PROVIDE NEW 75KVA TRANSFORMER, FEEDERS AND GROUND/BOND AND REFEED PANEL RPL.
- 16.120 PANELBOARD '10' UPGRADE: DEMOLISH PANELBOARD '10'. PROVIDE NEW PANELBOARD RPL2 AND FEEDER. SUB-FEED FROM PANEL RPL WITH NEW FEEDER, PROVIDE NEW 100/3 BREAKER AT RPL FOR SUB-FEED TO PANEL RPL2. PROVIDE JUNCTION BOXES, CONDUIT & RACEWAY TO EXTEND EXISTING BRANCH CIRCUITS TO NEW PANELBOARD.
- 16.130 DEMOLISH 45/3 BREAKER AND PROVIDE NEW 90/3 BREAKER FOR TRANSFORMER UPGRADE.
- 16.160 SUB-FEED FROM PANEL RPL WITH NEW FEEDER, PROVIDE NEW 100/3 BREAKER AT RPL FOR SUB-FEED TO PANEL PP2.
- 16.190 REMOVE EXISTING SWITCH, FUSE AND FEEDER FROM MDP TO REMOVED ROOF TOP UNIT. PROVIDE NEW SWITCH, FUSE AND FEEDER AS SHOWN.

ELECTRICAL ONE LINE RISER DIAGRAM - SERVICE #2  
SCALE: NTS 1

| PANEL: RPL2 |         |                             |       | 100A MLO |         |                        |       |
|-------------|---------|-----------------------------|-------|----------|---------|------------------------|-------|
| CR. NO.     | BK. NO. | DESCRIPTION                 | PHASE | CR. NO.  | BK. NO. | DESCRIPTION            | PHASE |
| 1           | 1P20    | REC-155, 156, 157, 158      | A     | 1        | 1P20    | REFRIGERATOR-152       | A     |
| 3           | 1P20    | REC-156, 158, 159           | B     | 3        | 1P20    | REC-152                | B     |
| 5           | 1P20    | REC-156                     | C     | 5        | 1P20    | REC-152                | C     |
| 7           | 1P20    | REC-156                     | A     | 7        | 1P20    | REC-155, 156, 157, 158 | A     |
| 9           | 1P20    | REC-156                     | B     | 9        | 1P20    | REC-153, 154           | B     |
| 11          | 1P20    | REC-156                     | C     | 11       | 1P20    | REC-151                | C     |
| 13          | 1P20    | REC-156                     | A     | 13       | 1P20    | REC-151                | A     |
| 15          | 1P20    | REC-156                     | B     | 15       | 1P20    | REC-151                | B     |
| 17          | 1P20    | REC-156                     | C     | 17       | 1P20    | REC-151                | C     |
| 19          | 1P20    | REC-156                     | A     | 19       | 1P20    | REC-152, 155, 156, 157 | A     |
| 21          | 1P20    | REC-156                     | B     | 21       | 1P20    | VAV'S                  | B     |
| 23          | 1P20    | REC-156                     | C     | 23       | 1P15    | EF-1                   | C     |
| 25          | 1P20    | REC-152, 153, 154, 155, 156 | A     | 25       | 1P20    | ROOF                   | A     |
| 27          | 1P20    | NAC                         | B     | 27       | 1P20    | SPACE                  | B     |
| 29          | 1P20    | SPACE                       | C     | 29       | 1P20    | SPACE                  | C     |

| PANEL: PP2 |         |             |       | 100A MLO |         |             |       |
|------------|---------|-------------|-------|----------|---------|-------------|-------|
| CR. NO.    | BK. NO. | DESCRIPTION | PHASE | CR. NO.  | BK. NO. | DESCRIPTION | PHASE |
| 1          | 1P20    | SPACE       | A     | 1        | 1P20    | SPACE       | A     |
| 3          | 1P20    | SPACE       | B     | 3        | 1P20    | SPACE       | B     |
| 5          | 1P20    | SPACE       | C     | 5        | 1P20    | SPACE       | C     |
| 7          | 1P20    | SPACE       | A     | 7        | 1P20    | SPACE       | A     |
| 9          | 1P20    | SPACE       | B     | 9        | 1P20    | SPACE       | B     |
| 11         | 1P20    | SPACE       | C     | 11       | 1P20    | SPACE       | C     |
| 13         | 1P20    | SPACE       | A     | 13       | 1P20    | SPACE       | A     |
| 15         | 1P20    | SPACE       | B     | 15       | 1P20    | SPACE       | B     |
| 17         | 1P20    | SPACE       | C     | 17       | 1P20    | SPACE       | C     |
| 19         | 1P20    | SPACE       | A     | 19       | 1P20    | SPACE       | A     |
| 21         | 1P20    | SPACE       | B     | 21       | 1P20    | SPACE       | B     |
| 23         | 1P20    | SPACE       | C     | 23       | 1P20    | SPACE       | C     |
| 25         | 1P20    | SPACE       | A     | 25       | 1P20    | SPACE       | A     |
| 27         | 1P20    | SPACE       | B     | 27       | 1P20    | SPACE       | B     |
| 29         | 1P20    | SPACE       | C     | 29       | 1P20    | SPACE       | C     |

| EXISTING PANEL: LPL |         |              |       | 225A MLO |         |              |       |
|---------------------|---------|--------------|-------|----------|---------|--------------|-------|
| CR. NO.             | BK. NO. | DESCRIPTION  | PHASE | CR. NO.  | BK. NO. | DESCRIPTION  | PHASE |
| 1                   | 1P20    | LTG-113, 114 | A     | 1        | 1P20    | LTG-114      | A     |
| 3                   | 1P20    | LTG-113, 114 | B     | 3        | 1P20    | LTG-114      | B     |
| 5                   | 1P20    | LTG-113, 114 | C     | 5        | 1P20    | LTG-114, 115 | C     |
| 7                   | 1P20    | LTG-113, 114 | A     | 7        | 1P20    | LTG-115, 116 | A     |
| 9                   | 1P20    | LTG-113, 114 | B     | 9        | 1P20    | LTG-115, 116 | B     |
| 11                  | 1P20    | LTG-113, 114 | C     | 11       | 1P20    | LTG-115, 116 | C     |
| 13                  | 1P20    | LTG-113, 114 | A     | 13       | 1P20    | LTG-115, 116 | A     |
| 15                  | 1P20    | LTG-113, 114 | B     | 15       | 1P20    | LTG-115, 116 | B     |
| 17                  | 1P20    | LTG-113, 114 | C     | 17       | 1P20    | LTG-115, 116 | C     |
| 19                  | 1P20    | LTG-113, 114 | A     | 19       | 1P20    | LTG-115, 116 | A     |
| 21                  | 1P20    | LTG-113, 114 | B     | 21       | 1P20    | LTG-115, 116 | B     |
| 23                  | 1P20    | LTG-113, 114 | C     | 23       | 1P20    | LTG-115, 116 | C     |
| 25                  | 1P20    | LTG-113, 114 | A     | 25       | 1P20    | LTG-115, 116 | A     |
| 27                  | 1P20    | LTG-113, 114 | B     | 27       | 1P20    | LTG-115, 116 | B     |
| 29                  | 1P20    | LTG-113, 114 | C     | 29       | 1P20    | LTG-115, 116 | C     |

ELECTRICAL ONE LINE RISER DIAGRAM - SERVICE #1  
SCALE: NTS 2KS+A  
KLUBER, SKAHAN + ASSOCIATES, INC.901 N. Bellevue Ave., Suite 301  
Barrington, Illinois 60010  
tel 630.406.1213  
fax 630.406.5472  
www.kluberskahan.com

AURORA PUBLIC LIBRARY: EOLA BRANCH RENOVATION

AURORA PUBLIC LIBRARY  
1 EAST BENTON STREET  
AURORA, ILLINOIS 60005

## GENERAL NOTES

ISSUED

FOR R.D.

10/2/06

10/2/06

10/2/06

10/2/06

10/2/06

10/2/06

10/2/06

10/2/06

10/2/06

10/2/06

10/2/06

10/2/06

10/2/06

10/2/06

10/2/06

10/2/06

JOB NO. 05-168-517

DRAWN MTK

CHECKED MTK

APPROVED MTK

SHEET TITLE

ELECTRICAL

ONE LINE RISER

DIAGRAMS

SHEET NUMBER

E6.1